

INSTRUCTIONS

Please resist the temptation to lift the lid unnecessarily as it disturbs the conditions in the incubator.

As hatching is a natural process, albeit with a little mechanical aide for ease here, it is highly unlikely that all of the eggs will hatch successfully.

Tuesday

We bring the incubator and eggs into school, set up your incubator and prepare the eggs. You should turn the eggs manually in the morning and at the end of each day until they go into the incubator. Simply push the tops of the eggs in one direction, and then when the next turn is due, push the other way.

Wednesday

Your incubator will now be running consistently at 37.6°C and 45% humidity. Place the eggs lying flat into the incubator as we showed you how to. Make sure the eggs have enough room to turn when the operation is activated and are not wedged against the dividers. The water tank should be topped up with lukewarm water **every 2-3 days**. Make sure you fill it up on a Friday afternoon so it has plenty for the weekend. Until the day you need to turn it off, regularly check that the turning function hasn't been accidentally turned off. The eggs need to turn to stay healthy. If it is off, press the 'SET' and 'TURN' buttons together. The 'TURNING ON' light will be illuminated.



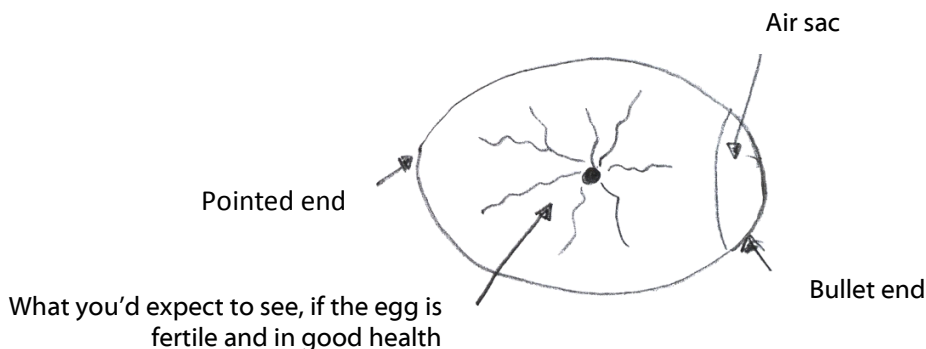
Topping up: make sure the ball is not stuck in the bottom of the tube. Fill with lukewarm water until the ball just reaches the top. If you continue to add water, the incubator will flood and may fail.

Day 1 Thursday

- Start counting from today.

Days 8 - 12 Thursday - Monday

- Your eggs can be candled.

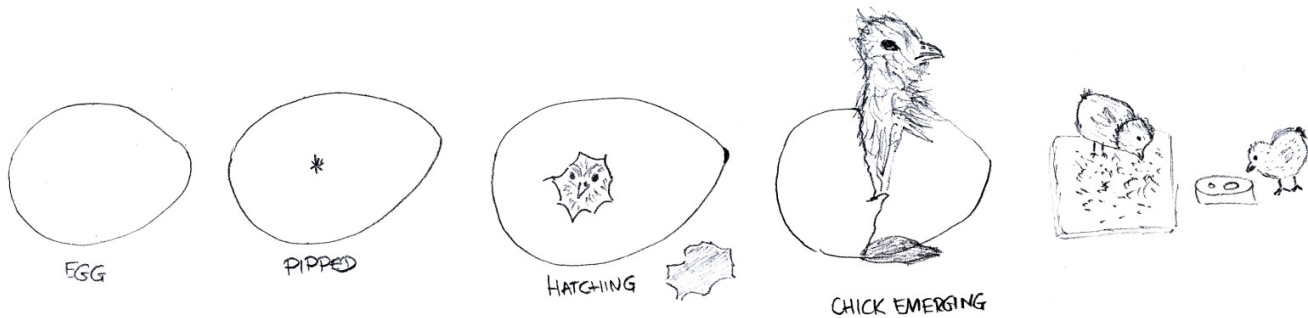


Day 19 Monday, first thing in the morning

- Increase the humidity to 65%. Press and hold 'SET' button, press 'HUMI +' button until it reaches 65%.
- Check the water level regularly as you may need to **top up the water every day** from now on.
- Take the dividers out and put them in a safe place.
- Turn off the turning operation of the machine. Press and hold the 'SET' and 'TURN' buttons together. The 'TURNING ON' light will no longer be illuminated.

Days 20 and 21 Tuesday and Wednesday

- On the morning of day 20, you need to turn on the heat lamp, ready for your new arrivals. Please be aware **the lamp will get hot on the outside.**
- Hatch! At around day 20 the chicks will start to 'pip'. The chicks have a sharp egg tooth on their beak and they use this to break out of the shell ('pipping'). At first a very small crack will appear in the egg. If you listen very carefully you may hear them start to cheep before they get out of the shell.
- Do not interfere with the chick before it has fully separated from the egg and dried out. Sometimes bits of the egg appear to be stuck to the chick, this is quite normal. In time everything will dry out and all the shell will fall off.
- The whole process of hatching each egg may take up to 24 hours, and it all happens inside the incubator with the lid closed.
- When each chick has *fully* dried out (it will go fluffy) it should be placed very carefully into the brooder. Don't be tempted to put the chick into the brooder too early. It is better for them to stay in the incubator for a bit longer, than to be in the brooder on their own. The cheeping chick in the incubator also encourages those trying to get out of their shells.
- If a chick hatches just before you go home for the day, there is no need to put it into the brooder when still wet. It can happily stay in the incubator for 24 hours.
- When there are a few empty shells in the incubator, you can take those out and discard them.
- Please leave the incubator on until we collect it on Friday.
- If a chick looks like it might not live, leave it for a few hours and it will go one way or the other. If it can't make its own way out of the shell, then even if you were to help it, it would be unlikely to live.



Brooder stage

We will have prepared your brooder for you before you need it. After you have placed your first chicks in the brooder they will regularly need fresh food and water. Just keep an eye on the levels and top them up as needed (making sure they are full before you leave them overnight). The pebbles are deliberately in the water bowls as they allow the chicks to enter and exit the water safely.

Although it is very tempting, please handle the chicks as little as possible. They are delicate, new-born living creatures and as such should be treated with tender care.

Day 24 Friday

- We will collect the chicks and all equipment.

Contact:

- Jayne: 07759 122603 (8am to 7pm)
- Alison: 07970 804571 (8am to 7pm)

www.IncubatorsForSchools.com Ellistown Farm, Ellistown Terrace Road, Coalville, Leics.